

## Nuts for T-Slots · DIN 508

EH 23010.



### Product Description

These nuts for T-slots (slot nuts) are manufactured according to DIN 508. The range is extended by other dimensions that are not included in DIN.

### Material

- Heat-treated steel, quality 8, bright
- Heat-treated steel, tempered, quality 10, blackened
- Stainless steel 1.4301

### Assembly

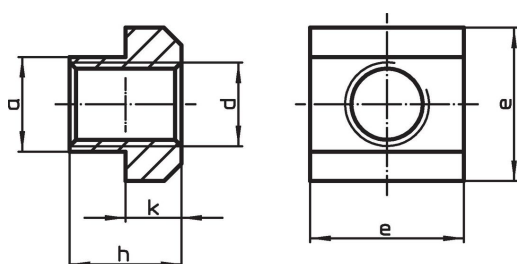
The entire loading capacity of the T-nut can only be applied if the screwing is guaranteed to be made over the total thread length of the T-nut.

### More information


### Notes

Customized design on request.


### Drawing




### Order information

T-slot size [mm]	d	a	Dimensions [mm]			e	h	k	for T-slots DIN 650 [mm]	Testing force to DIN 508 F min. [kN]		[g]	Art. No.
<b>Heat-treated steel, quality 8, bright</b>													
5	M 4	4.6	9	6.5	3	5	7.0	2.4	23010.0051				
6	M 5	5.6	10	8.0	4	6	11.4	3.4	23010.0061				
8	M 6	7.6	13	10.0	6	8	16.0	8.3	23010.0081				
10	M 6	9.6	15	12.0	6	10	16.0	14.0	23010.0103 <sup>1)</sup>				
10	M 8	9.6	15	12.0	6	10	29.0	12.0	23010.0101				
12	M 8	11.6	18	14.0	7	12	29.0	23.0	23010.0123 <sup>1)</sup>				
12	M10	11.6	18	14.0	7	12	46.0	20.0	23010.0121				
14	M10	13.6	22	16.0	8	14	46.0	38.0	23010.0143 <sup>1)</sup>				
14	M12	13.6	22	16.0	8	14	67.0	34.0	23010.0141				
16	M12	15.6	25	18.0	9	16	67.0	55.0	23010.0163 <sup>1)</sup>				
16	M14	15.6	25	18.0	9	16	–	49.0	23010.0161 <sup>1)</sup>				
18	M14	17.6	28	20.0	10	18	–	74.0	23010.0183 <sup>1)</sup>				
18	M16	17.6	28	20.0	10	18	128.0	68.0	23010.0181				
20	M16	19.6	32	24.0	12	20	128.0	116.0	23010.0203 <sup>1)</sup>				
20	M18	19.6	32	24.0	12	20	–	107.0	23010.0201 <sup>1)</sup>				
22	M18	21.6	35	28.0	14	22	–	162.0	23010.0223 <sup>1)</sup>				
22	M20	21.6	35	28.0	14	22	196.0	149.0	23010.0221				
24	M20	23.6	40	32.0	16	24	196.0	236.0	23010.0243 <sup>1)</sup>				
24	M22	23.6	40	32.0	16	24	–	221.0	23010.0241 <sup>1)</sup>				
28	M24	27.6	44	36.0	18	28	282.0	317.0	23010.0281				

<sup>1)</sup> DIN standards do not include these dimensions.

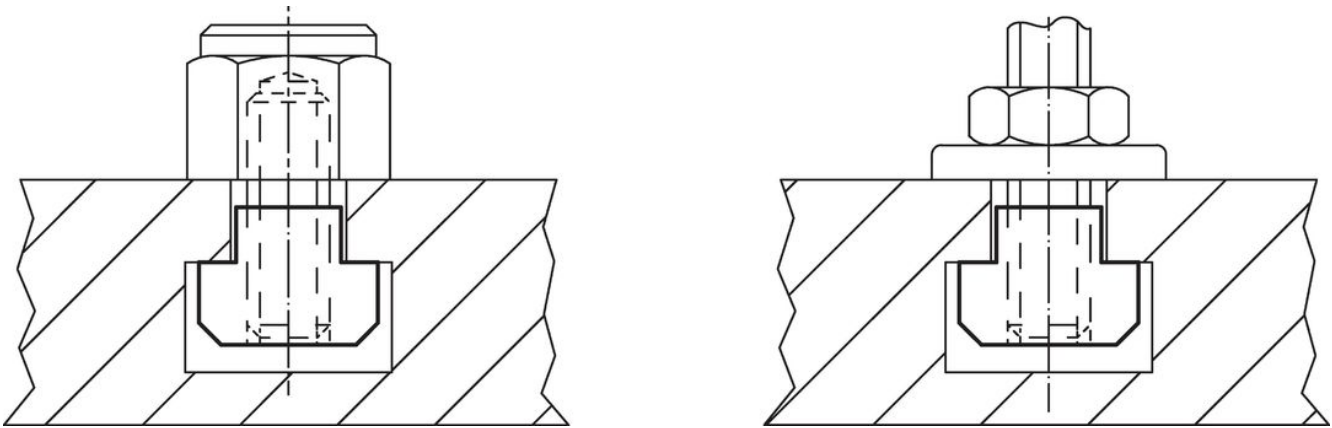
T-slot size [mm]	d	Dimensions [mm]				k	for T-slots DIN 650 [mm]	Testing force to DIN 508 F min. [kN]	 [g]	Art. No.
		a	e	h						
36	M30	35.5	54	44.0	22	36	448.0	585.0	23010.0361	
42	M36	41.5	65	52.0	26	42	653.0	1000.0	23010.0421	
48	M42	47.5	75	60.0	30	48	653.0	1500.0	23010.0481	
54	M48	53.4	85	70.0	34	54	653.0	2264.0	23010.0541	
<b>Heat-treated steel, tempered, quality 10, blackened</b>										
5	M 4	4.6	9	6.5	3	5	7.0	2.4	23010.0052	
6	M 5	5.6	10	8.0	4	6	11.4	3.4	23010.0062	
8	M 6	7.6	13	10.0	6	8	16.0	8.3	23010.0082	
10	M 6	9.6	15	12.0	6	10	16.0	14.0	23010.0104 <sup>1)</sup>	
10	M 8	9.6	15	12.0	6	10	29.0	12.0	23010.0102	
12	M 8	11.6	18	14.0	7	12	29.0	23.0	23010.0124 <sup>1)</sup>	
12	M10	11.6	18	14.0	7	12	46.0	20.0	23010.0122	
14	M 6	13.6	22	16.0	8	14	16.0	43.0	23010.0146 <sup>1)</sup>	
14	M 8	13.6	22	16.0	8	14	29.0	41.0	23010.0145 <sup>1)</sup>	
14	M10	13.6	22	16.0	8	14	46.0	38.0	23010.0144 <sup>1)</sup>	
14	M12	13.6	22	16.0	8	14	67.0	34.0	23010.0142	
16	M 8	15.6	25	18.0	9	16	29.0	62.0	23010.0166 <sup>1)</sup>	
16	M10	15.6	25	18.0	9	16	46.0	58.0	23010.0165 <sup>1)</sup>	
16	M12	15.6	25	18.0	9	16	67.0	55.0	23010.0164 <sup>1)</sup>	
16	M14	15.6	25	18.0	9	16	-	49.0	23010.0162 <sup>1)</sup>	
18	M 8	17.6	28	20.0	10	18	29.0	89.0	23010.0187 <sup>1)</sup>	
18	M10	17.6	28	20.0	10	18	46.0	85.0	23010.0186 <sup>1)</sup>	
18	M12	17.6	28	20.0	10	18	67.0	98.0	23010.0185 <sup>1)</sup>	
18	M14	17.6	28	20.0	10	18	-	74.0	23010.0184 <sup>1)</sup>	
18	M16	17.6	28	20.0	10	18	128.0	68.0	23010.0182	
20	M12	19.6	32	24.0	12	20	67.0	131.0	23010.0205 <sup>1)</sup>	
20	M16	19.6	32	24.0	12	20	128.0	116.0	23010.0204 <sup>1)</sup>	
20	M18	19.6	32	24.0	12	20	-	107.0	23010.0202 <sup>1)</sup>	
22	M12	21.6	35	28.0	14	22	67.0	189.0	23010.0225 <sup>1)</sup>	
22	M16	21.6	35	28.0	14	22	128.0	172.0	23010.0226 <sup>1)</sup>	
22	M18	21.6	35	28.0	14	22	-	162.0	23010.0224 <sup>1)</sup>	
22	M20	21.6	35	28.0	14	22	196.0	149.0	23010.0222	
24	M16	23.6	40	32.0	16	24	128.0	262.0	23010.0246 <sup>1)</sup>	
24	M20	23.6	40	32.0	16	24	196.0	236.0	23010.0244 <sup>1)</sup>	
24	M22	23.6	40	32.0	16	24	-	221.0	23010.0242 <sup>1)</sup>	
28	M16	27.6	44	36.0	18	28	128.0	375.0	23010.0286 <sup>1)</sup>	
28	M20	27.6	44	36.0	18	28	196.0	349.0	23010.0284 <sup>1)</sup>	
28	M22	27.6	44	36.0	18	28	-	332.0	23010.0283 <sup>1)</sup>	
28	M24	27.6	44	36.0	18	28	282.0	317.0	23010.0282	
32	M27	31.5	50	40.0	20	32	-	460.0	23010.0322 <sup>1)</sup>	
36	M24	35.5	54	44.0	22	36	282.0	663.0	23010.0364 <sup>1)</sup>	
36	M30	35.5	54	44.0	22	36	448.0	585.0	23010.0362	
42	M36	41.5	65	52.0	26	42	653.0	1000.0	23010.0422	
48	M42	47.5	75	60.0	30	48	653.0	1500.0	23010.0482	
54	M48	53.4	85	70.0	34	54	653.0	2264.0	23010.0542	

<sup>1)</sup> DIN standards do not include these dimensions.

T-slot size [mm]	d	Dimensions [mm]				k	for T-slots DIN 650 [mm]	Testing force to DIN 508 F min. [kN]	 [g]	Art. No.
		a	e	h						
Stainless steel 1.4301										
8	M 6	7.6	13	10.0	6	8	16.0	8.3	23010.0721	
10	M 8	9.6	15	12.0	6	10	29.0	12.0	23010.0731	
12	M10	11.6	18	14.0	7	12	46.0	20.0	23010.0741	
14	M12	13.6	22	16.0	8	14	67.0	34.0	23010.0751	
16	M14	15.6	25	18.0	9	16	–	49.0	23010.0761 <sup>1)</sup>	
18	M16	17.6	28	20.0	10	18	128.0	68.0	23010.0781	

<sup>1)</sup> DIN standards do not include these dimensions.

### Application example



### Compliance

#### RoHS compliant

Compliant according to Directive 2011/65/EU and Directive 2015/863.

#### Does not contain SVHC substances

No SVHC substances with more than 0.1% w/w contained - SVHC list [REACH] as of 27.06.2024.

#### Does not contain Proposition 65 substances

No Proposition 65 substances included.

<https://www.P65Warnings.ca.gov/>

#### Free from Conflict Minerals

This product does not contain any substances designated as "conflict minerals" such as tantalum, tin, gold or tungsten from the Democratic Republic of Congo or adjacent countries.