

## Tubular Handles • straight

24321.0440



### Product Description

Tubular handles are used, for example, on machine doors.

### Material

#### Handle

- Aluminium, plastic coated, similar to RAL 9005 black, matt structure

#### Handle shank

- Zinc die-cast
- Zinc die-cast, plastic coated, black, similar to RAL 9005, matt structure

#### Cap

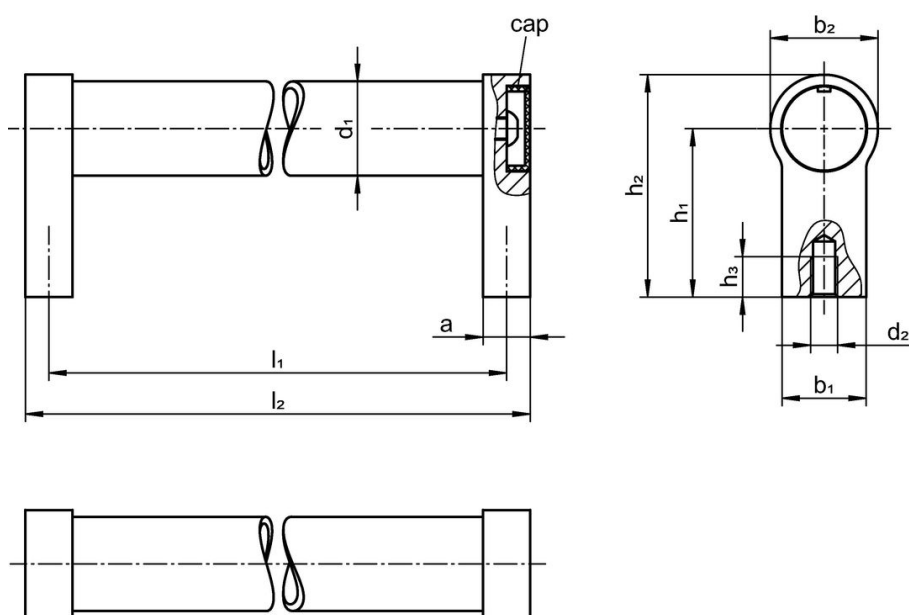
- Plastic, light grey

### More information

#### Notes

Customized design on request.

### Drawing



### Order information

$d_1$	$l_1$ $\pm 0.25$	a	$b_1$	Dimensions					$l_2$	[g]	Art. No.
				$d_2$	$h_1$	$h_2$	$h_3$ min.	[mm]			
28	250	14	25	M8	50	66	15	264	360	24321.0440	

## Compliance

### RoHS compliant

Compliant according to Directive 2011/65/EU and Directive 2015/863.

### Does not contain SVHC substances

No SVHC substances with more than 0.1% w/w contained - SVHC list [REACH] as of 27.06.2024.

### Does not contain Proposition 65 substances

No Proposition 65 substances included.

<https://www.P65Warnings.ca.gov/>

### Free from Conflict Minerals

This product does not contain any substances designated as "conflict minerals" such as tantalum, tin, gold or tungsten from the Democratic Republic of Congo or adjacent countries.