

## Hinges • Zinc die-cast

### 25163.0105



#### Product Description

These hinges from zinc die-cast are characterised by their simple and timeless design.

#### Material

##### Body

- Zinc die-cast, plastic coated, black, similar to RAL 9005, matt structure

##### Covering

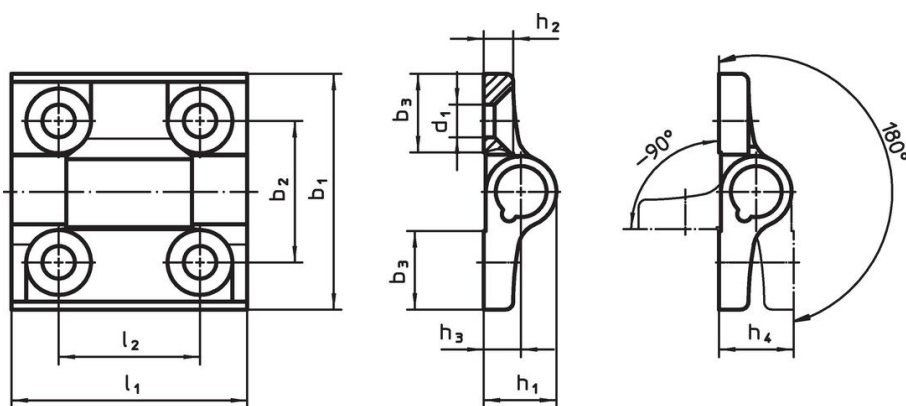
- Thermoplastic POM

#### More information

##### Further products

- Spacer Plates, for hinges
- Threaded Plates, for hinges

#### Drawing



#### Order information

Dimensions											max. [°C]	[g]	Art. No.		
b <sub>1</sub>	l <sub>1</sub>	b <sub>2</sub>	b <sub>3</sub>	d <sub>1</sub>	h <sub>1</sub>	h <sub>2</sub>	h <sub>3</sub>	h <sub>4</sub>	l <sub>2</sub>	[mm]					
Zinc die-cast, black															
60	60	36	20	8.3	18.5	7.5	9.5	19	36	80	137	25163.0105			

#### Compliance

##### RoHS compliant

Compliant according to Directive 2011/65/EU and Directive 2015/863.

##### Does not contain SVHC substances

No SVHC substances with more than 0.1% w/w contained - SVHC list [REACH] as of 27.06.2024.

##### Does not contain Proposition 65 substances

No Proposition 65 substances included.

<https://www.P65Warnings.ca.gov/>

##### Free from Conflict Minerals

This product does not contain any substances designated as "conflict minerals" such as tantalum, tin, gold or tungsten from the Democratic Republic of Congo or adjacent countries.