

## Thrust Angles

EH 1120.400 - EH 1122.300

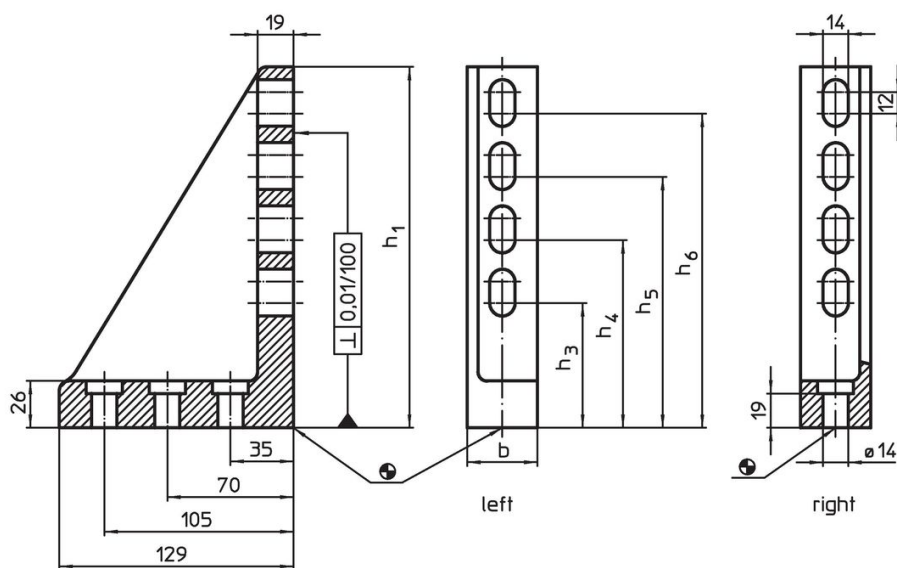


### Product Description

#### Material

- Grey cast iron, phosphatized, ground

### Drawing



### Order information

System	Dimensions						Position of web	📦 [g]	Art. No.
	b	h <sub>1</sub>	h <sub>3</sub>	h <sub>4</sub>	h <sub>5</sub>	h <sub>6</sub>			
V70	37	140	69	104	–	–	left	1546	<a href="#">1120.400</a>
V70	37	200	69	104	139	174	left	1820	<a href="#">1120.500</a>
V70	37	140	69	104	–	–	right	1450	<a href="#">1121.000</a>
V70	37	200	69	104	139	174	right	1840	<a href="#">1121.100</a>
V70	66	140	69	104	–	–	left	2970	<a href="#">1121.600</a>
V70	66	200	69	104	139	174	left	3753	<a href="#">1121.700</a>
V70	66	140	69	104	–	–	right	2970	<a href="#">1122.200</a>
V70	66	200	69	104	139	174	right	3466	<a href="#">1122.300</a>

## Compliance

### RoHS compliant

Compliant according to Directive 2011/65/EU and Directive 2015/863.

### Does not contain SVHC substances

No SVHC substances with more than 0.1% w/w contained - SVHC list [REACH] as of 27.06.2024.

### Does not contain Proposition 65 substances

No Proposition 65 substances included.

<https://www.P65Warnings.ca.gov/>

### Free from Conflict Minerals

This product does not contain any substances designated as "conflict minerals" such as tantalum, tin, gold or tungsten from the Democratic Republic of Congo or adjacent countries.